

Warehouse Management Software

easy  **wms**



Control and optimisation of warehouse processes, multiplying their profitability



MECALUX

Software Solutions



Outstanding advantages

The implementation of Easy WMS saves costs, improves the quality of service and maximises the profitability of the warehouse

- Two options for the solution's deployment: **cloud-based (SaaS) and on-premise.**
- **Ability to adapt to new needs or market trends**, such as e-commerce, facilitating actions like preparation of orders by waves and cross-docking.
- **Integration with any ERP** or any type of device.
- **Customisable architecture** by the user.
- **Integral communication** with SAP.
- Multi-owner, multi-warehouse and multilingual **functions.**
- **Lower logistical costs:** optimises the work force employed and the costs of handling.
- **Real-time inventory.**
- **Improvement of end customer services**, to allow demand to be met in a satisfactory and flexible manner, at the lowest possible cost.
- **Collaboration with leading providers** that attest to its quality, dependability and technical level:

Microsoft Partner
Gold Application Development



SAP Certified
Integration with SAP Applications





Easy WMS is able to manage a manually operated warehouse via paper or radio frequency, a mixed warehouse or a large automated installation with the same efficiency, regardless of its business sector.

Warehouse Management Software

easy  **wms**

Easy WMS is a powerful, robust, versatile and flexible software that controls, coordinates and manages all movements, operations and processes that take place in a warehouse, multiplying profitability in all areas: reception, storage, preparation of orders and dispatch of order outputs.

Its purpose is to optimise the physical and document management system of the flow of goods, from their entry into the warehouse to their final output, guaranteeing traceability.

Some immediate benefits that the implementation of Easy WMS brings are:

- Up to a 40% increase in storage capacity
- Up to 30% in the reduction of handling equipment
- Up to a 30% boost in picking productivity
- Up to 25% in the reduction of customer returns
- Up to a 30% decrease in handling operations
- Up to a 40% reduction in stock costs
- Up to 99% in error elimination

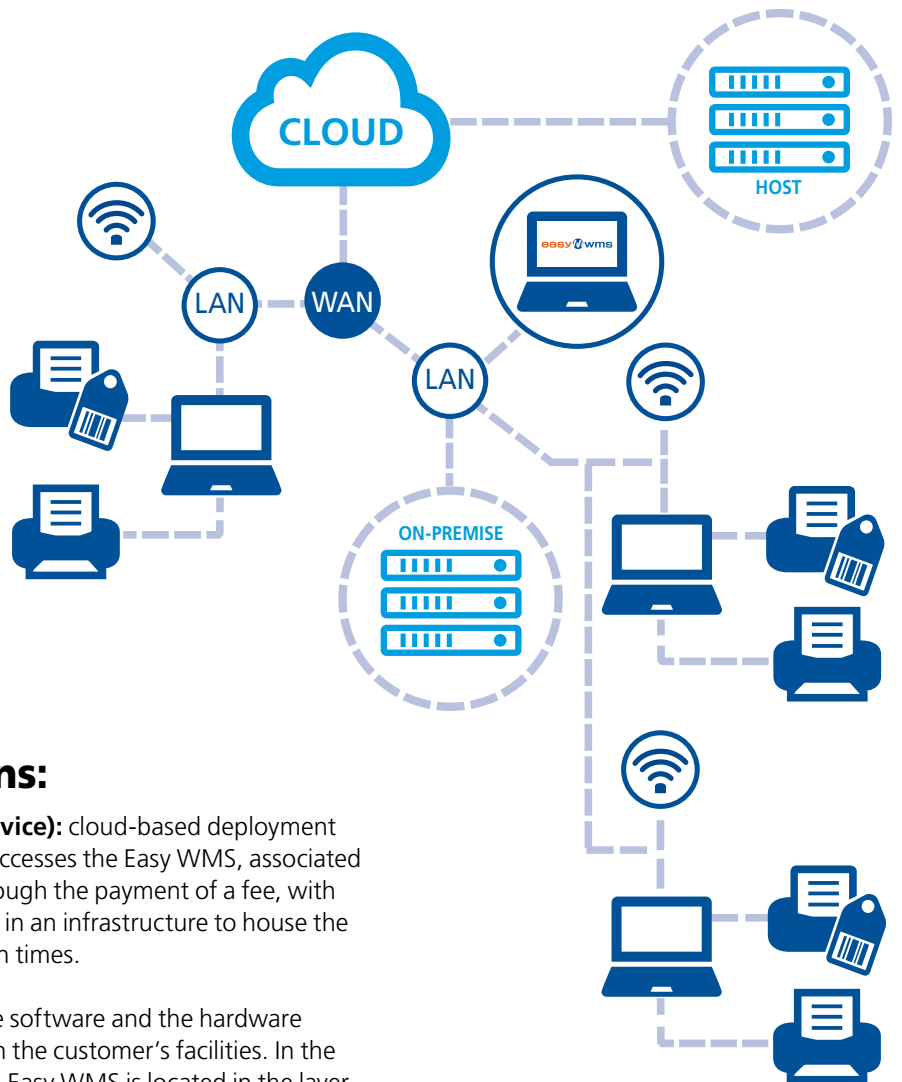
With a rapid return on investment and multiple options for customisation, Easy WMS from Mecalux Software Solutions is an investment in the future.

Warehouse Management Software



The software that adapts to company growth

The Easy WMS is optimised to grow and evolve with the company, because it provides tools and optional applications so that the user can adapt the program configuration to their changing needs, with maximum flexibility and autonomy.



Some customisation options:

- **Modality based on SaaS (Software as a Service):** cloud-based deployment model, with a 100% web interface. The client accesses the Easy WMS, associated applications and updates from any browser through the payment of a fee, with maximum security and without having to invest in an infrastructure to house the software in. This choice reduces implementation times.
- **On-premise modality:** in this option, both the software and the hardware required for its operations must be set up within the customer's facilities. In the hierarchical control and management structure, Easy WMS is located in the layer immediately below the global management system (ERP) of the company, with which it communicates directly, without intermediate layers and with the slim possibility of errors in data transmission.

Modular integration

Easy WMS has been developed with the latest technological standards in software and hardware. Its high versatility of integration allows additions to its architecture connections with any ERP and other devices such as pick to light, voice picking, label printers etc.

User-friendly interface

Easy WMS incorporates shortcuts, search tools, content labels and other aids for speedy navigation between screens or the fast filtering option, to facilitate the management of the application and improve the user experience. All with a highly intuitive, easy to use interface that allows direct access to information, presenting a high uniformity of the screens and a careful design of the graphic components.

Main functionalities

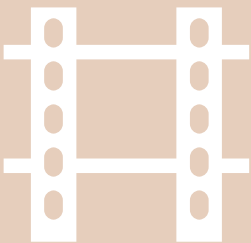
The WMS with the greatest number of features for managing all types of logistical operations

Receptions



- Cross-docking. Issuing stock directly from the receiving dock.
- Receptions with and without a prior order.
- Reception entries from providers or production.
- Capture of logistics data (control per batch, date of production or minimum durability, expiry date, serial No., calibre, color, etc.).
- Documentation of receptions.
- Bar code labelling.
- Partial receptions and returns.
- Automatic communication with the ERP.

Storage



- Location rule manager (by product, presentation, supplier, owner, turnover, etc.).
- Total traceability within the warehouse, from entry until dispatch.
- Automatic defragging.
- Manual or automatic replenishment of picking locations.
- Manual stock reserves.



The software uses rules and strategies, applicable to the goods and to the logical structure of the warehouse, that streamline storage tasks performed by operators or machines and provide constant maintenance of the order of products in the warehouse. All this provides perfect stock control in real-time.

Dispatch



- Dispatch orders.
- Optimisation of allocations, searches and times.
- Output orders grouped according to delivery routes, outputs of full pallets, etc.
- Management of picking (through RF terminals or using a fixed PC terminal).
- Pick to light / put to light. Management of PTL devices to carry out the picking process.
- Voice picking.
- Management of truck loading and delivery routes.
- Labelling and documentation of dispatches.
- Automatic communication with the ERP.

Tools

- Management of equipment.
- Report and label designer.
- Safety. The validation of the user is based on a security token.
- General queries.
- Navigation. Access to the different levels of information from a single screen.
- Control panel. Real-time measurement of the different parameters.

Stock control



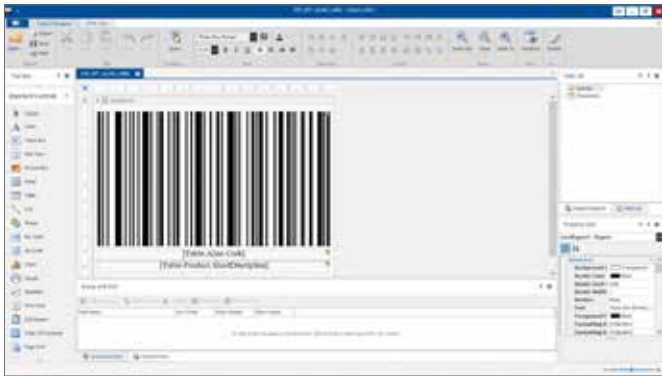
- Visualisation of the warehouse and its stock.
- Dynamic management of turnover.
- Recounts at any time of the day and according to established variables (owner, product, serial No., etc.).
- Lost & found management.

Easy WMS has numerous functionalities applicable to dispatches, like the optimisation of tasks on the routes of the operators or machines, order preparation by waves or by zones via order grouping, packaging operations or delivery route management.

Other products

Applications that multiply the range of Easy WMS operations

In addition to the development of the Easy WMS, Mecalux Software Solutions also proposes other applications that increase its flexibility and provide various logistics solutions to companies.

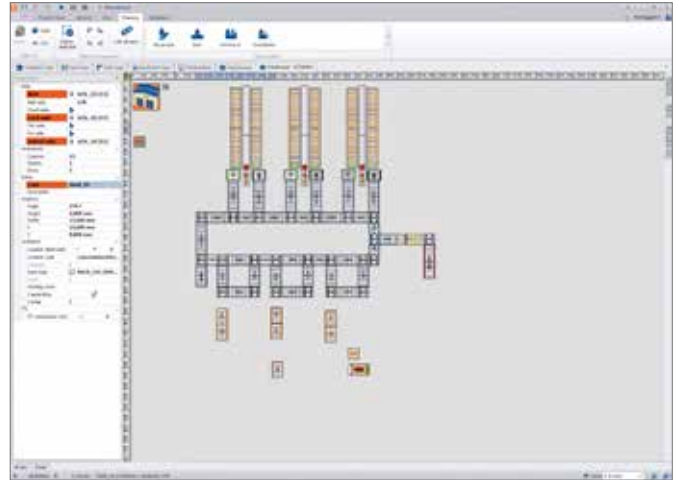


Easy Builder

This application is the development environment for Easy WMS. A single tool gives all the resources that **developers need to be able to customise Easy WMS**, from workflows, running through the report designer, and also internationalisation resources.

Via Easy Builder, the Easy WMS data dictionary is accessible, where all its elements are defined in order to visualise, edit and create new ones. Its user interface enables the position of windows to be stacked and reconfigured, for example, to work with widescreen monitors and adapt to multiscreen configurations.

Another of its distinctive features is that it allows for cooperative development thanks to its exclusive version control system, so that multiple users can work on the same project at the same time and without the possibility of overlapping.



Easy S

An integrated tool for the configuration, graphic design and simulation of Easy WMS. Allows the user to **design, configure and simulate the operation of a warehouse** quickly and easily, offering comprehensive statistics for each item.

Reduces the time required to deploy the software, improves communication between the client and the support service, and facilitates proactive diagnostics.



Easy Monitor

Backups and a monitoring system that prevents and identifies possible incidents. Allows the **query of the installation activity status remotely and securely, 24 hours a day**. It also has an alarm system that alerts the remote maintenance team of any abnormal situation.

Mecalux Software Solutions

The challenge: achieving maximum efficiency in the supply chain

Why choose Mecalux Software Solutions as a technological partner for your company?



Backed by a solid company with more than 50 years of experience, a deep understanding of business and prospects for the future.



More than 130 engineers exclusively dedicated to the development of software solutions, in addition to a worldwide technical support network.



Experience provided by hundreds of successful deployments in large, medium and small companies from all sectors.



Flexibility: Mecalux adapts to the needs and objectives of each company, offering broad customisation possibilities with Easy WMS.



Development and constant updating of the product, thanks to investments in R&D to continuously adapt the software to the needs of the customers.



Remote maintenance service for clients upon request, with technical support 24 hours a day, 7 days a week.



MECALUX

Software Solutions

www.mecalux.com/easy - e-mail: easywms@mecalux.com

Tel. **932 61 69 03**

Mecalux is present in more than 70 countries worldwide

Offices in: Argentina - Belgium - Brazil - Canada - Chile - Czech Republic - France - Germany - Italy - Mexico - Netherlands - Peru - Poland - Portugal - Slovakia - Spain - Turkey - United Kingdom - Uruguay - USA