

Compact storage modules



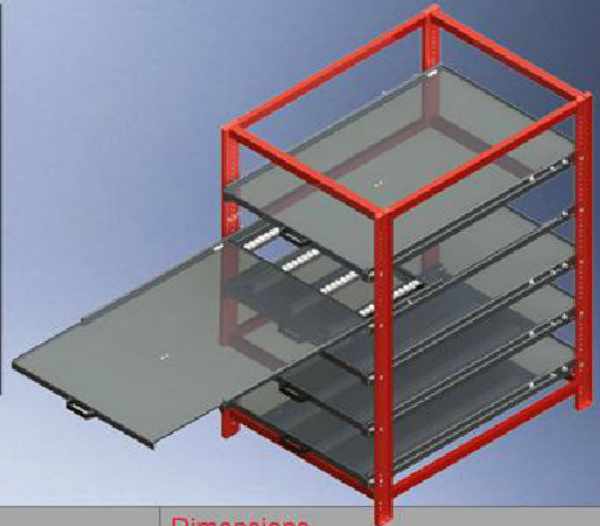
Compact storage module 70%

Pull-out shelves 70%, each shelf takes 200kg.

Article no.	Specification	Dimensions
22 600-0	Compact storage module with 3 shelves	D=1206 W=880 H=1550mm
22 800-0	Compact storage module with 4 shelves	D=1206 W=880 H=1550mm
22 1000-0	Compact storage module with 5 shelves	D=1206 W=880 H=1550mm
22 1200-0	Compact storage module with 6 shelves	D=1206 W=880 H=1550mm
22 1400-0	Compact storage module with 7 shelves	D=1206 W=880 H=1550mm
22 1600-0	Compact storage module with 8 shelves	D=1206 W=880 H=1550mm
22 1800-0	Compact storage module with 9 shelves	D=1206 W=880 H=1550mm
22 601-0	Compact storage module with 3 shelves	D=1206 W=900 H=1550mm
22 801-0	Compact storage module with 4 shelves, shelf lock	D=1206 W=900 H=1550mm
22 1001-0	Compact storage module with 5 shelves, shelf lock	D=1206 W=900 H=1550mm
22 1201-0	Compact storage module with 6 shelves, shelf lock	D=1206 W=900 H=1550mm
22 1401-0	Compact storage module with 7 shelves, shelf lock	D=1206 W=900 H=1550mm
22 1601-0	Compact storage module with 8 shelves, shelf lock	D=1206 W=900 H=1550mm
22 1801-0	Compact storage module with 9 shelves, shelf lock	D=1206 W=900 H=1550mm

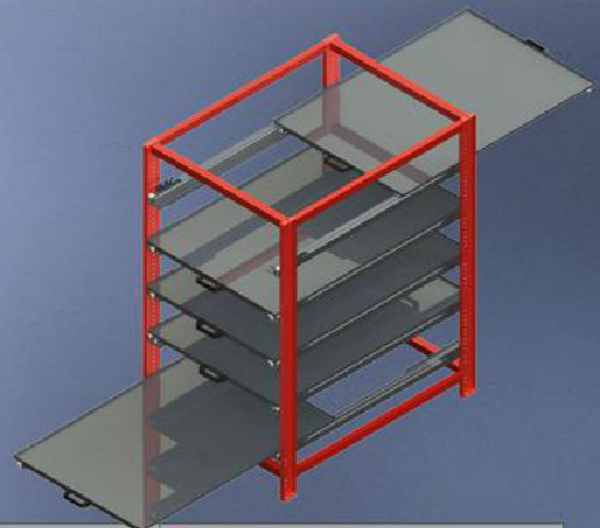
We take safety seriously

Pull-out units should be bolted to the floor or fitted within the pallet racking in such a way that they can't tip over. If that's not suitable then we have a special shelf locking system (designed in-house) which only allows one shelf at a time to be pulled out, and so prevents tipping. If you want to move the unit around a lot, we recommend a transport lock which locks all the shelves in place.

**Compact storage module 100%**

Pull-out shelves extend all the way out. Each shelf takes 150kg.

Article no.	Specification	Dimensions
22 1204-3	Compact storage module with 3 shelves	D=1206 W=880 H=1550mm
22 1204-4	Compact storage module with 4 shelves	D=1206 W=880 H=1550mm
22 1204-5	Compact storage module with 5 shelves	D=1206 W=880 H=1550mm
22 1204-6	Compact storage module with 6 shelves	D=1206 W=880 H=1550mm
22 1204-7	Compact storage module with 7 shelves	D=1206 W=880 H=1550mm
22 1204-8	Compact storage module with 8 shelves	D=1206 W=880 H=1550mm
22 1204-9	Compact storage module with 9 shelves	D=1206 W=880 H=1550mm
22 1205-3	Compact storage module with 3 shelves, shelf lock	D=1206 W=900 H=1550mm
22 1205-4	Compact storage module with 4 shelves, shelf lock	D=1206 W=900 H=1550mm
22 1205-5	Compact storage module with 5 shelves, shelf lock	D=1206 W=900 H=1550mm
22 1205-6	Compact storage module with 6 shelves, shelf lock	D=1206 W=900 H=1550mm
22 1205-7	Compact storage module with 7 shelves, shelf lock	D=1206 W=900 H=1550mm
22 1205-8	Compact storage module with 8 shelves, shelf lock	D=1206 W=900 H=1550mm
22 1205-9	Compact storage module with 9 shelves, shelf lock	D=1206 W=900 H=1550mm

**Compact storage module , two-way shelves, 70%**

Pull-out shelves extend 70% in either direction.
Each shelf takes 200kg.

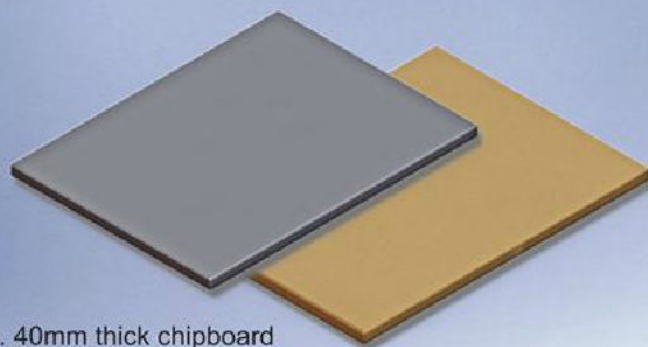
Article no.	Specification	Dimensions
22 1801-3	Compact storage module, two-way 3 shelves	D=1206 W=880 H=1550mm
22 1801-4	Compact storage module, two-way 4 shelves	D=1206 W=880 H=1550mm
22 1801-5	Compact storage module, two-way 5 shelves	D=1206 W=880 H=1550mm
22 1801-6	Compact storage module, two-way 6 shelves	D=1206 W=880 H=1550mm
22 1801-7	Compact storage module, two-way 7 shelves	D=1206 W=880 H=1550mm
22 1801-8	Compact storage module, two-way 8 shelves	D=1206 W=880 H=1550mm
22 1801-9	Compact storage module, two-way 9 shelves	D=1206 W=880 H=1550mm

Optional accessories for compact storage modules



Work top for compact storage module

Superior quality work surface for long life and easy goods handling. 40mm thick chipboard composite with solid wood core, finished with grey linoleum wipable surface and edged with solid beech wood. Supplied with pre-drilled holes and captive nuts for easy attachment to compact storage module. Please enquire for other choices of materials.

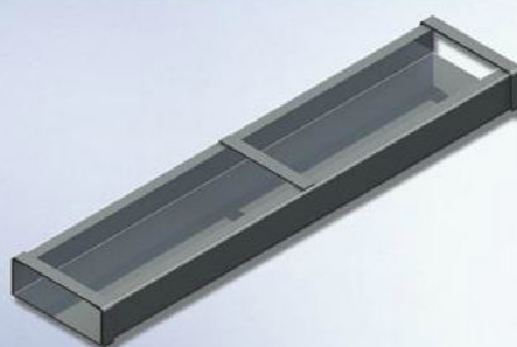


Article no.	Specification	Dimensions
22 000-2	Work top, grey linoleum, 4xM8 nuts	1210 x 885 x 40mm

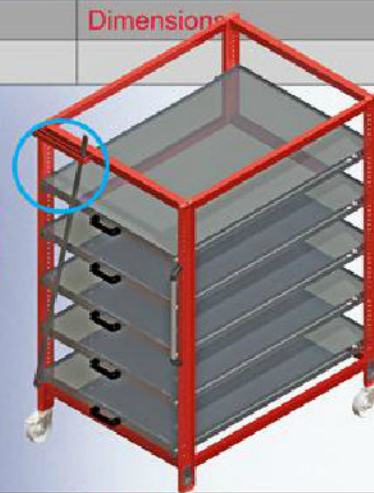


Forklift pockets

Welded in place before painting, so cannot be ordered separately from module.



Article no.	Specification	Dimensions
22 300-0	Forklift pockets (2) for compact storage modules	



Transport lock

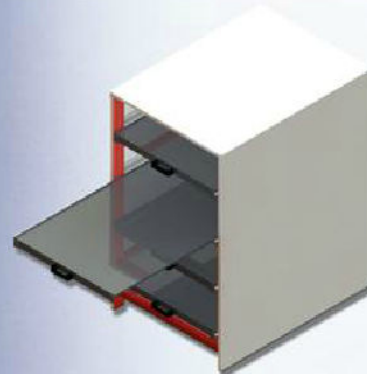
Stops shelves sliding out when transporting, especially needed if you want to use a fork lift truck to move the module around. Cannot be added later as it is welded to the frame before painting.

Article no.	Specification	Dimensions
22 301-0	Transport lock for compact storage module	



Steel cladding

Sheet steel cladding for dusty environments and secure storage. Cannot be added later, supplied ready fitted.



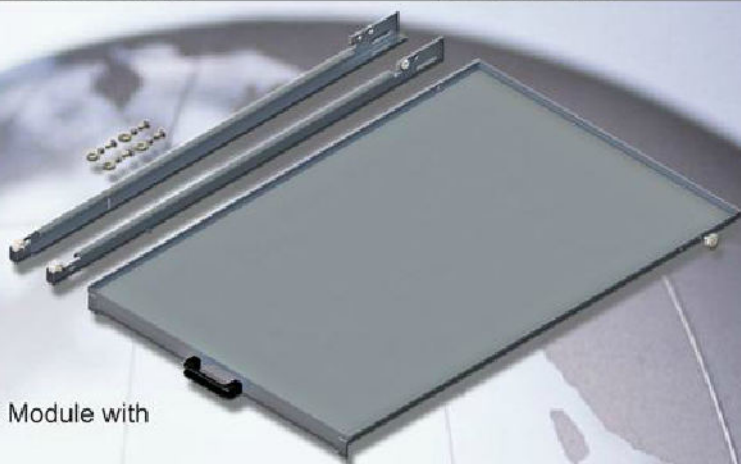
Article no.	Specification	Dimensions
22 100-0	Side, back and top panels for compact storage module .	
22 101-0	Doors (2) for compact storage module	



Side handle

Side handles are available in various lengths.
Specify placement when ordering.

Article no.	Specification	Dimensions
22 503-0-200	Side handle for compact storage module, stainless	L=200 Ø30mm
22 503-0-300	Side handle for compact storage module, stainless	L=300 Ø30mm
22 503-0-500	Side handle for compact storage module, stainless	L=500 Ø30mm



Shelf for compact storage module

Are you planning to add a shelf to a Compact Storage Module with shelf lock? Please contact us for more information.

Article no.	Specification	Dimensions
22 201-0	Shelf for compact storage module complete with rails, 200kg, 70%	D=1211 B=810 H=52mm
22 202-0	Shelf for compact storage module complete with rails, 200kg, 70%, Two-way function	D=1211 B=810 H=52mm
22 204-0	Shelf for compact storage module complete with rails, 150kg, 100%	D=1211 B=810 H=52mm

22 420-0



22 420-11



22 420-12



Wheel kit

Complete wheel kit, available as option or add-on accessory.
Supplied ready fitted when ordered with compact storage unit.
The wheel kits are dimensioned for compact storage modules with maximum 800 kg load. Please contact us for higher load capacities.

Article no.	Specification	Dimensions
22 420-0	Wheel kit for compact storage module, 2 swivel and 2 swivel wheels with brakes	Load 450kg/module
22 420-11	Wheel kit for compact storage module, 2 fixed and 2 swivel wheels with brakes	Load 600kg/module
22 420-12	Wheel kit for compact storage module, 2 fixed and 2 swivel wheels with brakes	Load 1600kg/module

Optional accessories for compact storage modules



22 500-0



22 501-0

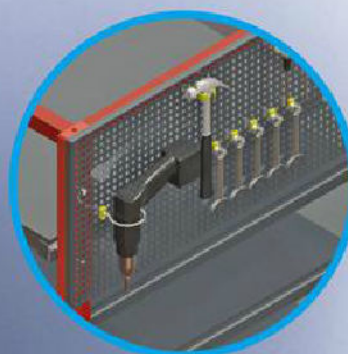
Pallet collars and shelf collars

Euro pallet collars with corner lugs removed. For shelf collars, shelves have steel lips which hold collar in place.

Article no.	Specification	Dimensions
22 500-0	Pallet collar, with corner lugs removed	H=195mm
22 501-0	Shelf collar, softwood	H=100mm



Plastic trays



Metal pegboard

